



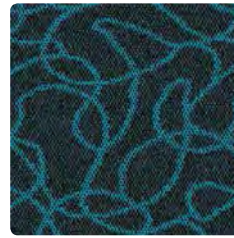
Clear Bubbles



Ripple Effect



Illuminate



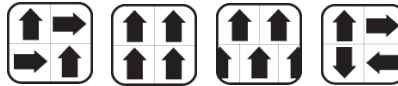
Isle Capri



Radiant

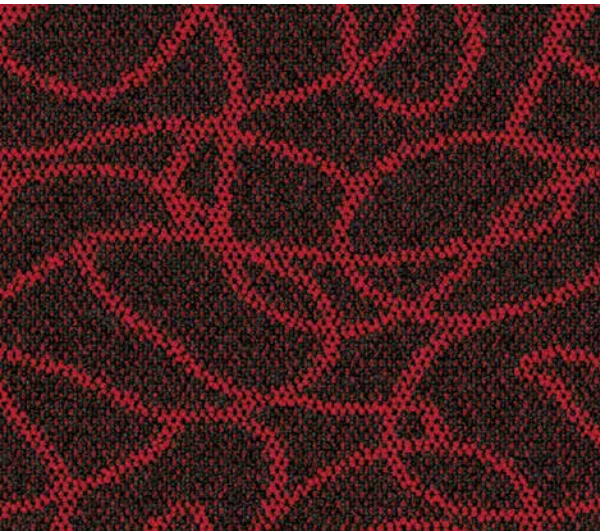


Gleam



## Atlantis\*

### PRODUCT SPECIFICATIONS



	NexBac Tiles
<b>Construction</b>	Tufted Multi Scroll Loop Pile
<b>Fibre Type</b>	Stainproof SDX (Solution Dyed Nylon)
<b>Recycled Content Use</b>	Backing: NexBac Eco (available on request) & Pile Yarn
<b>Classification</b>	Heavy Commercial
<b>Pile Height</b>	2mm, 4mm & 5.5mm
<b>Total Thickness</b>	8mm
<b>Pile Weight</b>	660g/m <sup>2</sup>
<b>Standard Size Available</b>	50 x 50cm
<b>Machine Gauge</b>	1/10
<b>Stitches/10cm</b>	45
<b>Fire Index</b>	Pass ( 6.6kW/m <sup>2</sup> )
<b>Colourfastness To:</b>	
(i) Light	7 (ISO 105 – B02)
(ii) Rubbing	(a) Wet 4 – 5 (ISO 105 – X12)
Rubbing	(b) Dry 4 – 5 (ISO 105 – X12)
(iii) Water	4 – 5 (ISO 105 – E01)
<b>Electrostatic Propensity</b>	Less than 2.0 kV (ISO 6356 & EN 1307)
<b>StaticControl</b>	Permanent
<b>VOC Tested</b>	Passed

Note: Carpet protector mats are necessary where castor wheels are used. \*\* Weighted average. \*\*\* Also available in 60cm x 60cm, 1m x 50 cm and 1m x 1m NexBac tiles. As these sizes are not standard, minimum production quantities apply. Please contact your nearest Belgotex Floors representative for more information.

